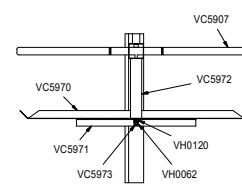
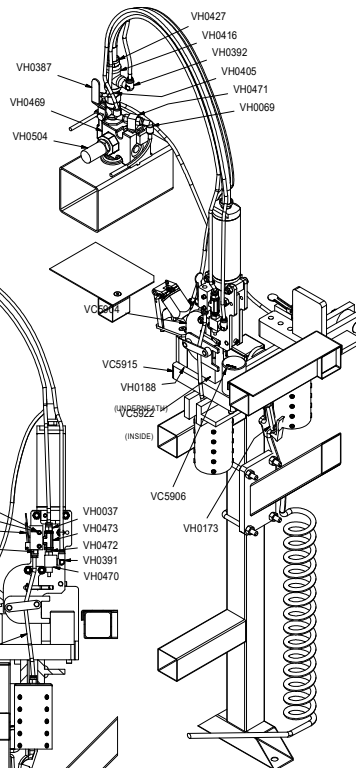


SECTION B-B



SECTION C-C

Parts List			Parts List		
PART #	DESCRIPTION	QT	PART #	DESCRIPTION	QT
VH0386	SAFETY VALVE	1	VC5224	MODEL AND SERIAL NUMBER TAG	1
VH0387	VALVE, LEVER HANDLE, 1/2 NPT	5	VC5904	TOOL ASSEMBLY	5
VH0390	FTG. BR3 CMPRSN. STR. 1/2 x 1/2	1	VC5906	ANVIL	5
VH0391	BRASS FTG. 90, 1/4 x 1/8 NPT	7	VC5907	DOUBLE ENDED SPOOL ROD	3
VH0392	PUSH-IN FTG. 1/4 x 1/4 NPT	5	VC5910	MAGNETIC GUIDE	10
VH0401	BHCS, 1/2 - 13 x 2 1/2	2	VC5912	VERSACLIPPER 4000 FRAME ASSY	1
VH0402	SHCS, 5/16 - 18 x 5/8	4	VC5915	TOOL BASE	5
VH0405	NIPPLE, 1/2 NPT x 1 1/8 CLOSE	10	VC5919	MANIFOLD ASSEMBLY	1
VH0416	TEE, REDUCER, 1/2 x 1/4 x 1/2	5	VC5920	SPACER	2
VH0418	PLUG, 1/2 NPT	1	VC5922	THREADED SPACER	5
VH0427	HOSE BARB, 1/2 x 1/2 NPT	5	VC5924	STOP	2
VH0453	SHCS, 3/8 - 32 x 1	14	VC5925	STOP BASE	2
VH0468	LIMIT VALVE	7	VC5945	TOOL RAIL	1
VH0469	VALVE	5	VC5946	TOOL RAIL	1
VH0470	VALVE, PUSH BUTTON	5	VC5962	RAIL REST PLATFORM	1
VH0471	SHUTTLE VALVE	5	VC5963	KNEE ASSEMBLY	1
VH0472	NIPPLE, 1/8 NPT x 3/4 CLOSE	10	VC5966	PLATFORM	1
VH0473	TEE, 1/8	5	VC5967	KNEE KNOCKER ROD	1
VH0474	TUBING, 1/4, POLYURETHANE, x 10 1/2 YELLOW	5	VC5968	SPACER	2
VH0483	SWITCH	1	VC5970	CLIP TRAY	1
VH0484	TORSION SPRING, LEFT	1	VC5971	TRAY SUPPORT	1
VH0501	U-BOLT	4	VC5972	TRAY STAND-OFF	3
VH0502	WASHER, LOCK, #8	14	VC5973	THREADED ROD	3
VH0504	MUFFLER, 3/4 NPT	5	VC5983	PNEUMATIC CYLINDER ASSEMBLY	7
VH0516	VALVE, QUICK EXHAUST	1	VH0035	CLAMP COLLAR	3
VH0517	MUFFLER, 1/4	1	VH0037	PUSH-IN FTG., 1/4 OD x 1/8 NPT	12
VH0518	TEE, 1/4	2	VH0054	NUT, HEX, 1/2 - 13, GR5	2
Platform		3	VH0057	ELBOW, 3/8	1
Sub			VH0058	PUSH-IN FTG., 1/2 OD x 3/8 NPT	1
VH0020	RETENTION COIL HOSE, BLUE	1	VH0062	NUT, HEX, 5/16 - 18	6
VH0246	TUBING, 1/4, POLYETHYLENE x 26	1	VH0067	CAP	7
VH0069	PUSH-IN FTG., 90, 1/4 OD x 1/8 NPT	12	VH0071	3/8 NPT COUPLER	1
VH0079	BUSHING, REDUCER, 3/8 x 1/4 x 3/16	3	VH0079	BUSHING, REDUCER, 3/8 x 1/4 x 3/16	3
VH0079	BUSHING, REDUCER, 3/8 x 1/4 x 3/16	3	VH0120	WASHER, LOCK, 5/16	4
VH0125	WASHER, LOCK, 5/16	4	VH0125	WASHER, LOCK, 5/16	4
VH0157	SHCS, 1/4 - 20 x 5/8 W/PATCH x 42	4	VH0172	VALVE, VENTED SHUT-OFF BALL	1
VH0172	VALVE, VENTED SHUT-OFF BALL	1	VH0173	AIR GUN	1
VH0173	AIR GUN	1	VH0188	FHCS, 3/8 - 16 x 7/8	10
VH0188	FHCS, 3/8 - 16 x 7/8	10	VH0201	PUSH-IN FTG., 1/4 OD x 1/4 NPT x 91	1
VH0201	PUSH-IN FTG., 1/4 OD x 1/4 NPT x 91	1	VH0206	PUSH-IN FTG., 1/2 OD x 3/8 NPT x 112	1
VH0206	PUSH-IN FTG., 1/2 OD x 3/8 NPT x 112	1	VH0218	FILTER/REGULATOR LUBRICATOR	2
VH0250	TUBING, DUAL 1/4 x 112	1	VH0219	BRACKET	1
VH0245	HOSE, 1/2 ID, BLUE x 26	5	VH0230	NIPPLE, 3/8 NPT x 1 CLOSE	4
VH0245	HOSE, 1/2 ID, BLUE x 26	5	VH0233	WASHER, 1/2	3
VH0474	TUBING, 1/4, POLYURETHANE, x 6 3/4 YELLOW	2	VH0238	DRIVE SCREW	4
VH0246	TUBING, 1/4, POLYETHYLENE x 1 1/2	5	VH0246	TUBING, 1/4, POLYETHYLENE x 1 1/2	7
VH0246	TUBING, 1/4, POLYETHYLENE x 43	1	VH0246	TUBING, 1/4, POLYETHYLENE x 44	1
VH0246	TUBING, 1/4, POLYETHYLENE x 5 1/4	4	VH0246	TUBING, 1/4, POLYETHYLENE x 5 1/4	4
VH0246	TUBING, 1/4, POLYETHYLENE x 40	1	VH0246	TUBING, 1/2, POLYETHYLENE x 40	1
VH0343	TEE, 3/8	2	VH0343	TEE, 3/8	2
VH0353	HHCS, 1/2 - 13 x 1 1/2	2	VH0353	HHCS, 1/2 - 13 x 1 1/2	2
VH0359	PUSH-IN FTG., TEE, 1/4 OD	10	VH0359	PUSH-IN FTG., TEE, 1/4 OD	10

REV	DESCRIPTION	BY	APPD	DATE	MATERIAL:	WORKS OFFICE	© 2003	VERTEX FASTENERS 1798 SHERWIN AVENUE DES PLAINES, IL 60018 U.S.A.
E	REVISED PARTS LIST	JMW	DA	6-16-05			DWYN BY JMW	
F	REVISED PARTS LIST	JMW	DA	3-15-06	HEAT TREATMENT:		APPD DA	
G	REVISED PARTS LIST	JMW	DA	6-29-07			SCALE 3-12-02	
H	REVISED PARTS LIST	JMW	MR	9-26-12	FINISH:		DATE	
J	REVISED PARTS LIST	JMW		7-31-13			SCALE	
							DWG. NO. VC5009	D



1798 Sherwin Avenue
Des Plaines, IL 60018 U.S.A.
EMAIL: vertex@leggett.com

PHONE: 847-768-6139 FAX: 847-768-7192