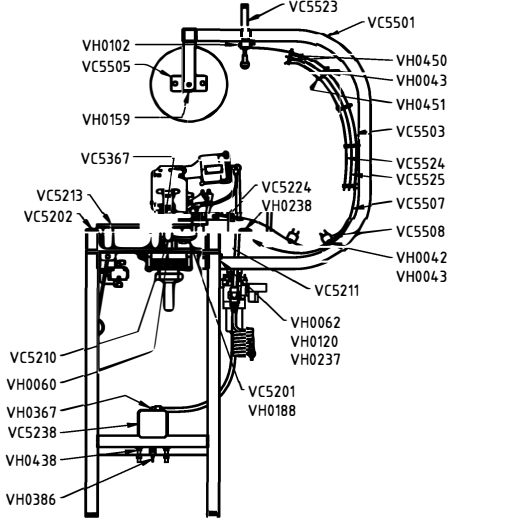
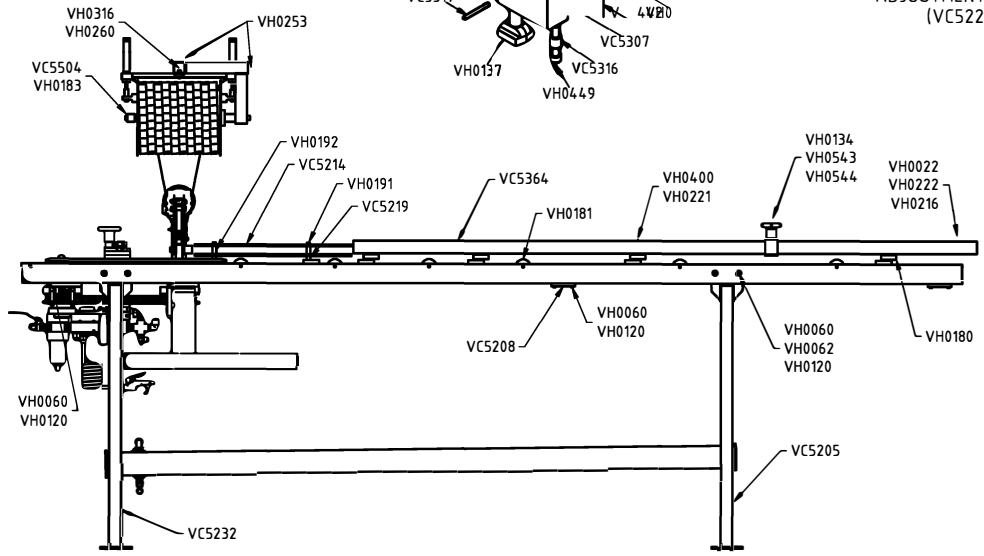
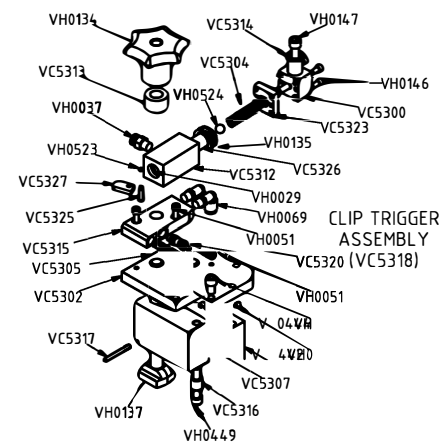
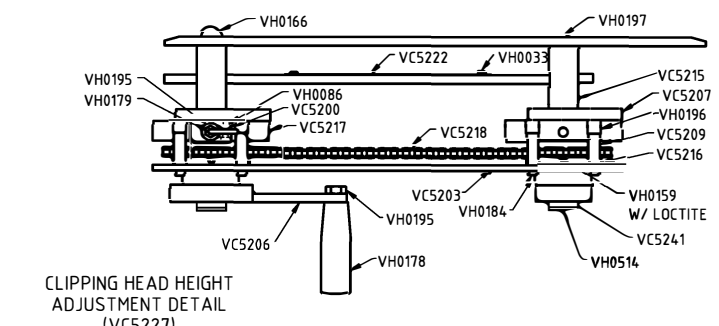
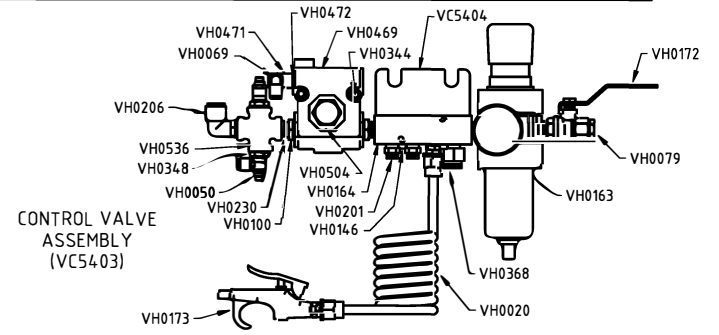


PART #	DESCRIPTION	QTY	VH0062	NUT, 5/16 - 18	10	VH0253	CAP	2	VH0472	NIPPLE 1/8	1	VH0524	3/8 CHROME BALL	1
VC5200	PLUNGER BRACKET	1	VH0069	PUSH-IN FTG, 90, 1/4 x 1/8 NPT	4	VH0260	WASHER, LOCK, 1/4	1	VH0504	MUFFLER	1	VH0536	CROSS, 3/8	1
VC5201	SUB-PLATE	1	VH0079	BUSHING, HEX REDUCER, 3/8 x 1/4	1	VH0316	SHCS, 1/4 - 20 x 3/4	1	VH0514	SHCS, 5/8 - 11 x 6	2	VH0543	Z-BRACKET	1
VC5202	FRONT RAIL	1	VH0086	SHCS, 1/4 - 20 x 1 1/4	2	VH0344	SHCS, 5/16 - 18 x 2	2	VH0523	O-RING, #004	1	VH0544	NUT, STUD	1
VC5203	KEEPER PLATE	1	VH0100	BUSHING, HEX REDUCER, 1/2 x 3/8	2	VH0348	BUSHING, HEX REDUCER, 3/8 x 1/8	2						
VC5205	LEG ASSEMBLY	1	VH0102	SHCS, 8 - 32 x 3/8 w/ LKG PATCH	3	VH0367	PUSH-IN TUBE FTG, 90°	1						
VC5206	HANDLE EXTENSION	1	VH0120	LOCK WASHER, 5/16	24	VH0368	PUSH-IN FTG, STR, 1/2 x 1/4 NPT	1						
VC5207	FIXED PLATE	2	VH0134	KNOB	2	VH0386	SAFETY VALVE	1						
VC5208	STRUT	2	VH0135	O-RING, PISTON	-	VH0400	SHCS, 1/4 - 20 x 1 1/2	4						
VC5209	SPACER	8	VH0137	1/2 - 13 x 5 1/2 T-BOLT	1	VH0438	U-BOLT	2						
VC5210	CENTER RAIL	1	VH0146	10 - 32 x 1 1/2 SHCS	6	VH0442	SET SCREW, 10 - 32 x 1/4	1						
VC5211	REAR RAIL	1	VH0147	5/16 - 24 x 1 1/4 SHCS	1	VH0444	SHCS 5/16 - 24 x 1/2	4						
VC5213	BASE PLATE	1	VH0159	SET SCREW, 5/16 - 18 x 1/2	3	VH0449	5/16 - 24 x 3 SHCS	1						
VC5214	ENTRY GUIDE RAIL	2	VH0163	FILTER/REGULATOR W/ GAUGE	1	VH0450	SPACER	20						
VC5215	SPACER	4	VH0164	MANIFOLD	1	VH0451	SHCS, 8 - 32 x 1 3/4	10						
VC5216	SPROCKET	2	VH0166	ACORN NUT, 5/8 - 11	1	VH0469	VALVE	1						
VC5217	ELEVATOR NUT	2	VH0172	VALVE, VENTED SHUT-OFF BALL	1	VH0471	SHUTTLE VALVE	1						
VC5218	CHAIN	1	VH0173	AIR GUN	1									
VC5219	ENTRY GUIDE RAIL STUD	2	VH0178	HANDLE	1									
VC5222	SCALE, ENGLISH	1	VH0179	PLUNGER	1									
VC5224	VC NAMEPLATE	1	VH0180	SKATE WHEEL	1									
VC5232	LEG ASSY W/ WELDED MNTG BRKT	1	VH0181	ROLLER	4									
VC5238	TANK ASSEMBLY	1	VH0183	SHCS, 3/8 - 16 x 3/4	1									
VC5241	ACME ROD	2	VH0184	SHCS, 1/4 - 20 x 2 1/2	8									
VC5300	CYLINDER END CAP	1	VH0188	FHCS, 3/8 - 16 x 7/8	1									
VC5302	MOUNTING PLATE	1	VH0191	SHCS, 1/4 - 20 x 2 1/4	2									
VC5304	SPRING	1	VH0192	STANDOFF, 1/4 ID, 1/2 OD, 1 LONG	2									
VC5305	SPRING	1	VH0195	JAM NUT, 1/2 - 13	2									
VC5307	RISER	1	VH0196	BEARING, CAM ROLLER	8									
VC5312	CYLINDER BODY	1	VH0197	FHMS, 5/16 - 18 x 3 1/2	4									
VC5313	SPACER	1	VH0201	PUSH-IN FTG, STR, 1/4 x 1/4 NPT	2									
VC5314	BUSHING	1	VH0206	PUSH-IN FTG, 90, 1/2 x 3/8 NPT	1									
VC5315	MANIFOLD HOUSING	1												
VC5316	SPACER	1												
VC5317	POINTER	1												
VC5320	AIR VALVE, CARTRIDGE	1												
VC5323	CYLINDER SPACER	1												
VC5325	PIN	1												
VC5326	TRIGGER PISTON	1												
VC5327	FLAG	1												
VC5364	UNI-STRUT RAIL	1												
VC5367	MEASURING TAPE, ENGLISH	1												
VC5404	CLIP TRIGGER BRACKET	1												
VC5501	DISPENSER FRAME	1												
VC5503	CLIP CHUTE	1												
VC5504	SPOOL ROD	1												
VC5505	MAGNETIC BRAKE BLOCK	1												
VC5507	TRACK	1												
VC5508	TRACK GUIDE	2												
VC5523	CLIP LIFTER	1												
VC5524	INSIDE CLIP CHUTE	1												
VC5525	STRIP GUIDE FOR CHUTE	2												
VH0020	RETRACTABLE HOSE	1												
VH0022	BHCS, 10 - 32 x 1/2	2												
VH0029	O-RING	-												
VH0033	BHCS, 10 - 32 x 1/4	2												
VH0037	PUSH-IN FTG, 1/4 x 1/8 NPT	1												
VH0042	SHCS, 8 - 32 x 1/4	4												
VH0043	LOCK NUT, 8 - 32 (THIN HEIGHT)	12												
VH0050	FLOW CONTROL	2												
VH0051	10 - 32 x 1/2 SHCS	3												
VH0060	SHCS, 5/16 - 18 x 3/4	25												
VH0216	FLEX NUT, 10 - 32	2												
VH0221	WASHER, 1/4 SAE	4												
VH0222	WASHER, 3/4 OD 3/16 ID	2												
VH0230	NIPPLE, 3/8 NPT	4												
VH0237	SHCS, 5/16 - 18 x 1 1/2	2												
VH0238	DRIVE SCREW, #4 x 5/16	4												



REV	DESCRIPTION	BY	APPD	DATE	MATERIAL:	© 2000	VERTEX FASTENERS INC.
A		JMW		8-29-01	-	DWN BY	JMW
B	TOOL UPDATE	JMW		4-18-02	HEAT TREATMENT:	APPD	DA
C	ECN 393	JMW	DA	8-13-04	-	DATE	8-20-01
					FINISH:	SCALE	NONE
					-	DWG. NO.	VC5005