

VersaClipper 900

Model # _____

Serial # _____



1798 Sherwin Avenue
Des Plaines, IL 60018 U.S.A.
EMAIL: vertex@leggett.com

PHONE: 847-768-6139 FAX: 847-768-7192

Table of Contents

DESCRIPTION OF EQUIPMENT	3
OPERATING INSTRUCTIONS	3
FIGURE 1	4
FIGURE 2	5
SAFETY INSTRUCTIONS	6
MAINTENANCE	6
TROUBLESHOOTING INFORMATION	6
FIGURE 3	7
FIGURE 4	7
 <u>DRAWINGS</u>	
VERSACLIPPER 900 (VC5000).....	8
TOOL ASSEMBLY (VC5820).....	9

DESCRIPTION OF EQUIPMENT

The VersaClipper 900 is a specially designed machine used by upholstered furniture manufacturers to quickly and accurately install patented VersaClips into wooden frame rails. The straightforward, innovative design elements have resulted in a productive, and versatile machine for all manufacturers.

The VersaClipper 900 is made up of two main components:

1. Clip Dispenser Frame
 - a. The Clip Dispenser Frame holds a spool of VersaClips containing 1,500 pieces.
2. Tool Assembly (Clipping Head)
 - a. The Tool Assembly installs VersaClips into wooden furniture rails.

OPERATING INSTRUCTIONS

Loading a Spool of VersaClips

1. Hold counterweight.
2. Remove locking pin.
3. Lift counterweight.
4. Install locking pin.
5. Load clips (Fig. 1).
6. Remove stretch film.
7. Thread clips through track guides.
8. Replace spool lift to original position.
9. Replace locking pin.
10. Push clips into back of tool until clips contact driver blade.

Removing VersaClips from Tool Assembly

1. Lift feed cylinder.
2. Depress pawl while removing clips.

Adjusting Anvil

For proper clip application, the anvil must be adjusted to the proper height. Place rail in tool so the bottom rests on the anvil and the front face is flush against the tool. Raise or lower anvil using the adjustment knob to the appropriate height. The top edge of the rail should lie within the etched area of the sideplate of the tool. Secure locking pin in place once the adjustments have been made.

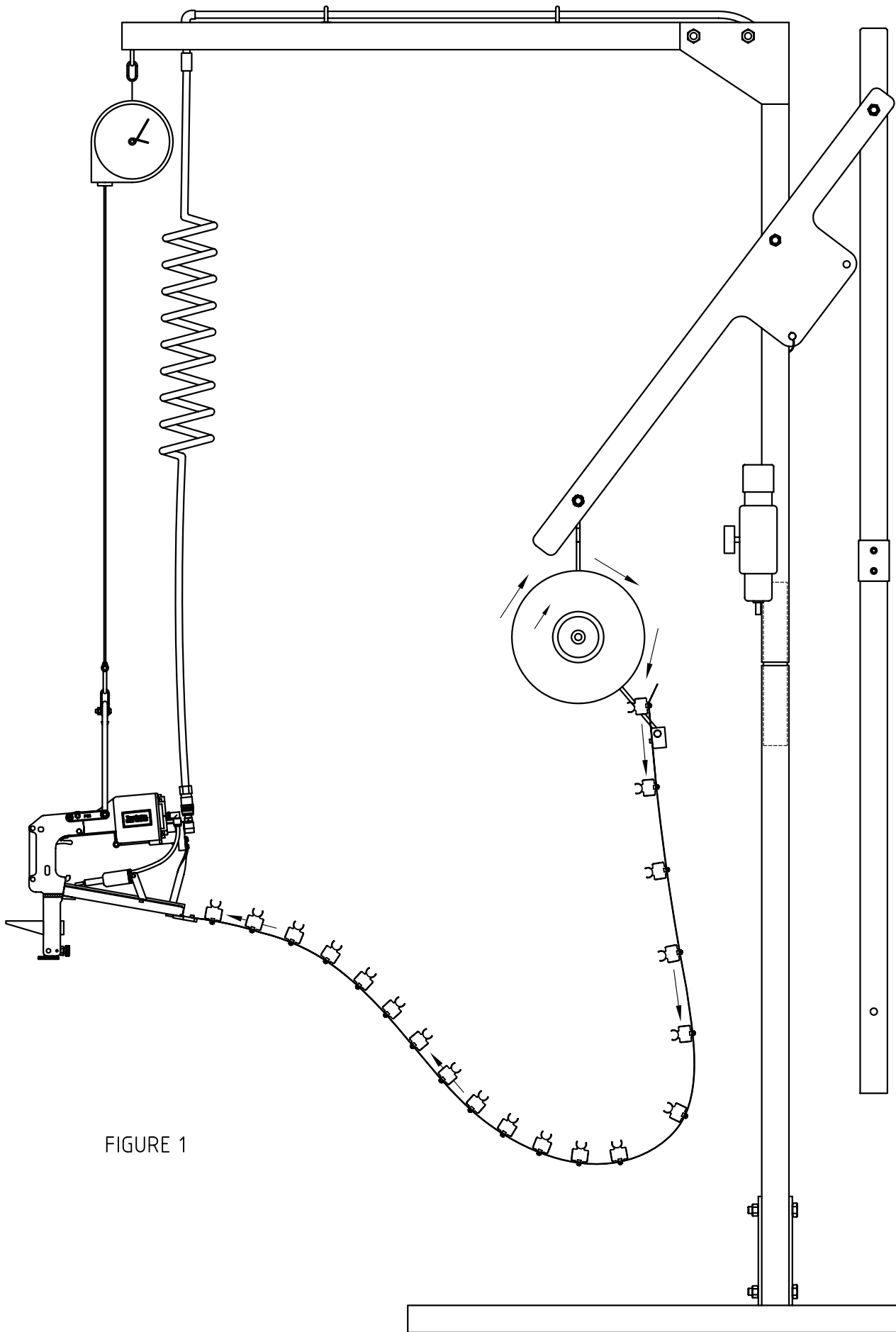
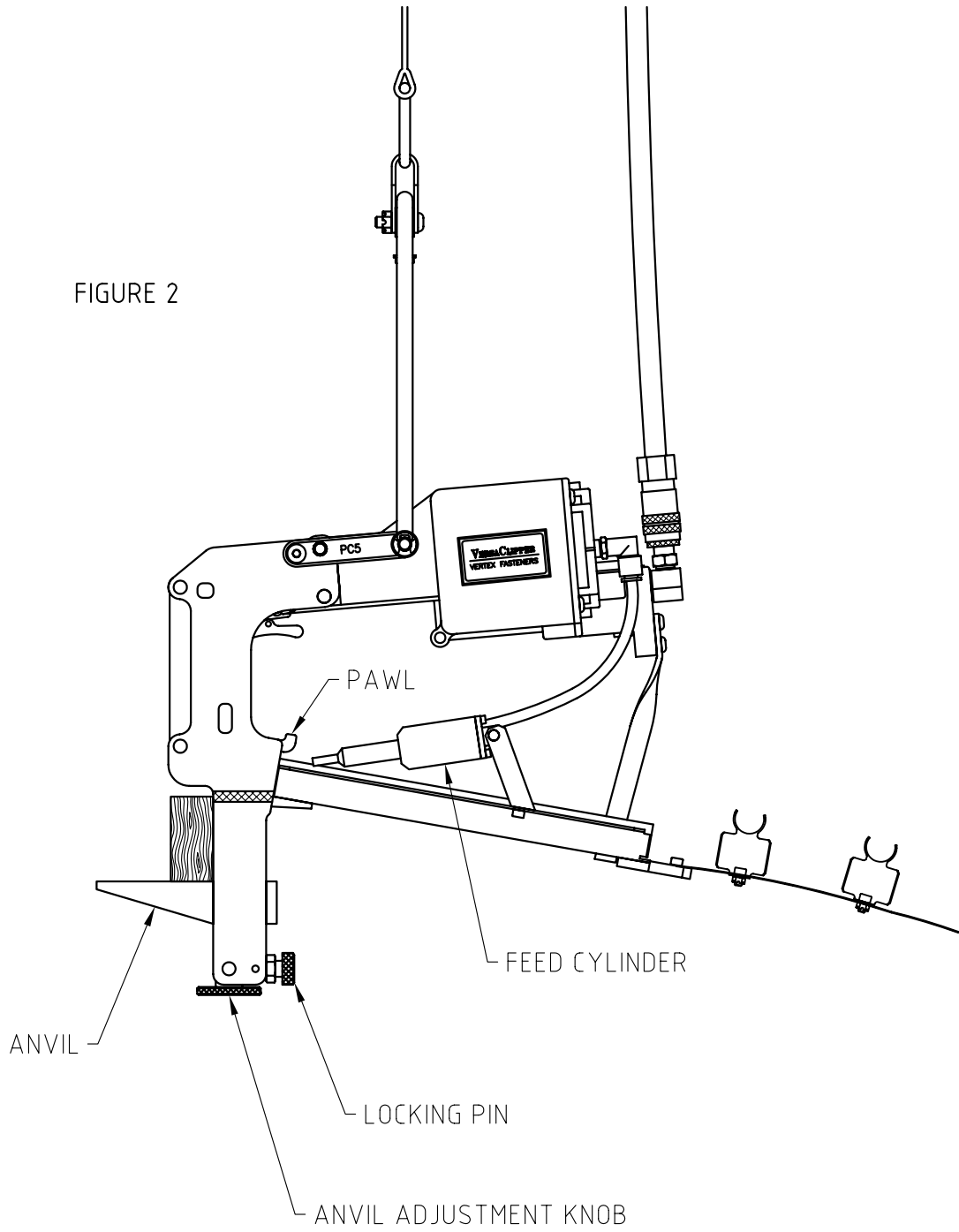


FIGURE 1

FIGURE 2



Set air pressure between 60 – 100 psi for proper operation of the VersaClipper 900. After the required adjustments have been made and the clips have been loaded you may begin production

SAFETY INSTRUCTIONS

1. Operators should ALWAYS wear safety glasses while operating, maintaining or repairing the equipment.
2. NEVER place hands or fingers near clip exit area when operating tool or when connecting air supply to machine.
3. Always shut off air supply when servicing tool.

MAINTENANCE

Recommended Daily Maintenance

1. Using an air gun, blow off woodchips and debris from Tool assembly.
2. Add 2-3 drops of 30 weight oil to opening between front plate and top of blade of Tool assembly.

Recommended Monthly Maintenance

Remove front plate from tool and lubricate driver blade and front plate.

TROUBLESHOOTING INFORMATION

<u>PROBLEM</u>	<u>CAUSE</u>	<u>SOLUTION</u>
Blade does not return.	Obstruction in tool.	Remove obstruction.
Clips not feeding.	Dispenser obstruction.	Remove obstruction.
Top of clip not seated against rail (Fig. 3).	Low air pressure. Improper Anvil height.	Increase pressure. (Never exceed 100 psi) Adjust Anvil height.
Clip's base is away from rail (Fig. 4).	Tool not flush against front face of rail.	Place tool flush against front face of rail.
Clips driven too far into rail.	Air pressure too high. Improper Anvil height.	Reduce air pressure. Adjust Anvil height.

FIGURE 3

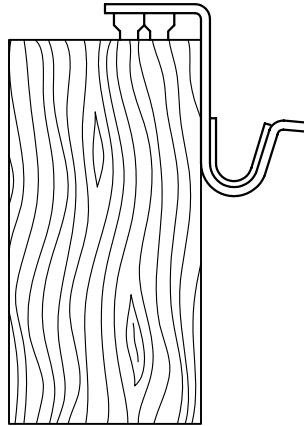
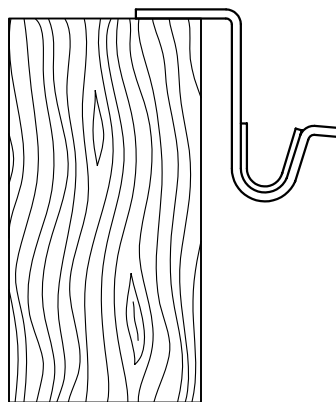
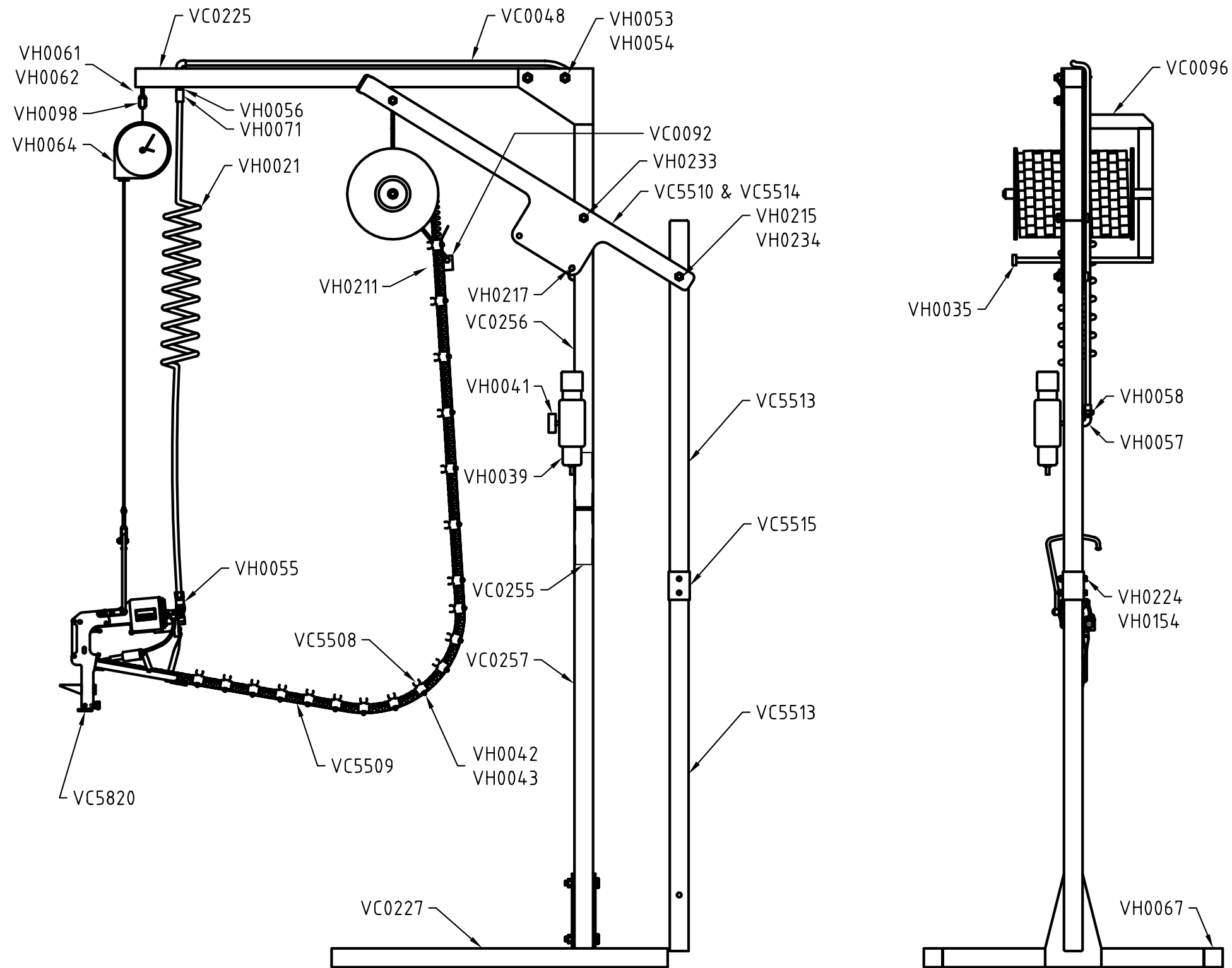


FIGURE 4



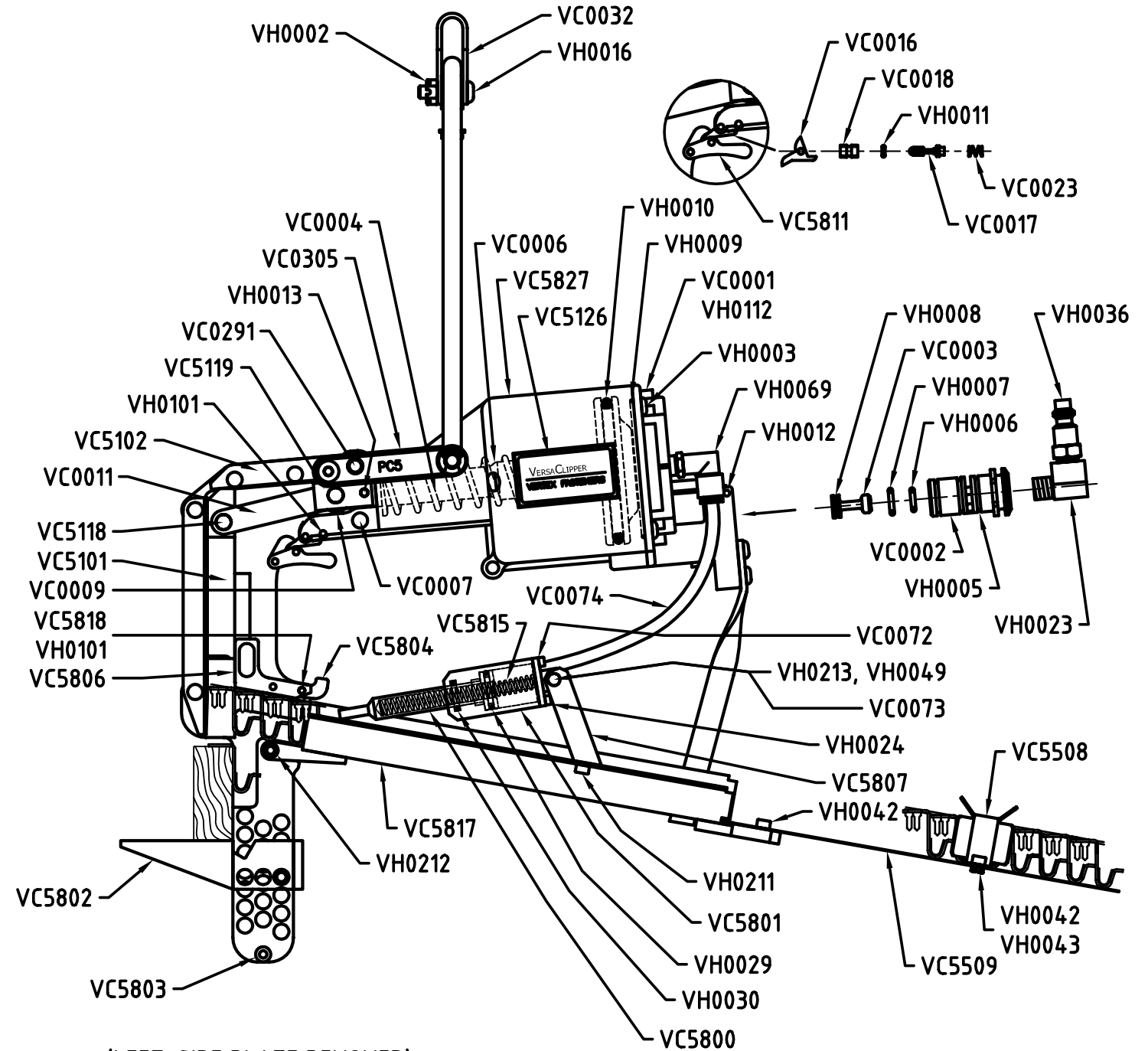
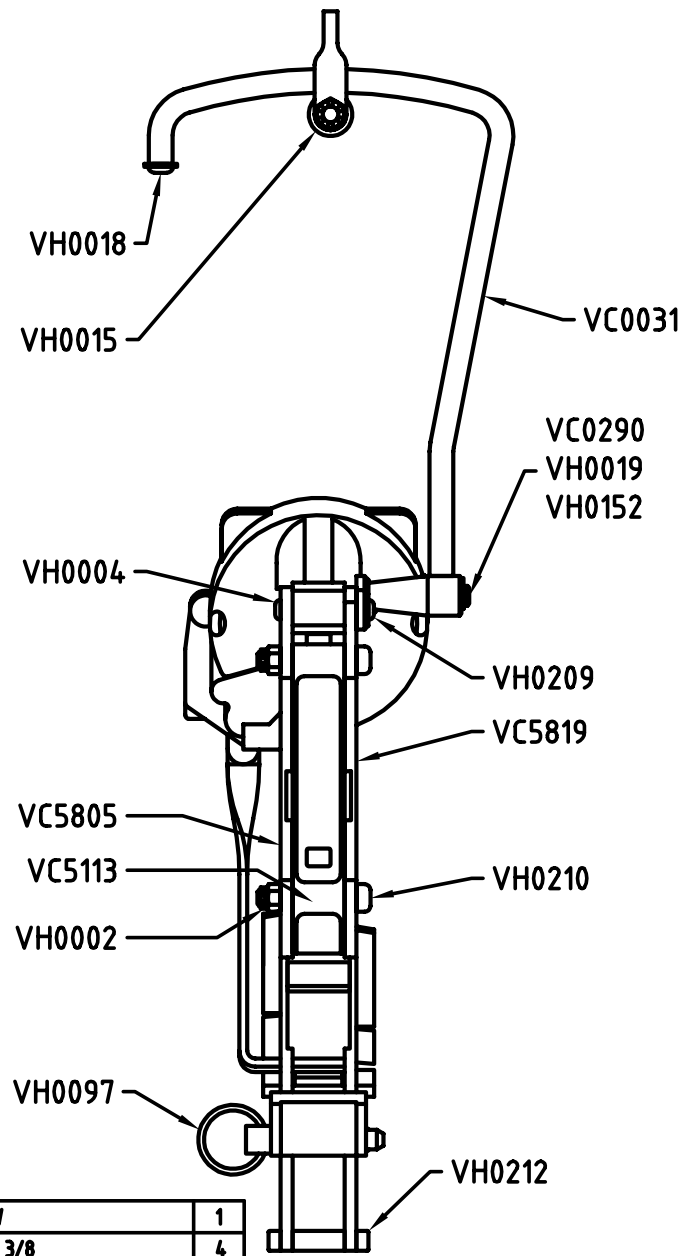
PART #	DESCRIPTION	QTY
VC0048	HOSE	1
VC0092	CARRIAGE	1
VC0096	SPOOL HANGER ASSEMBLY	1
VC0225	ARM	1
VC0227	FRAME BASE	1
VC0255	STEEL PIN	1
VC0256	UPPER HALF OF UPRIGHT	1
VC0257	LOWER HALF OF UPRIGHT	1
VC5508	TRACK GUIDE	19
VC5509	TRACK	1
VC5510	SPOOL LIFT LEFT SIDE	1
VC5513	COUNTER BALANCE	2
VC5514	SPOOL LIFT RIGHT SIDE	1
VC5515	COUNTER BALANCE COLLAR	1
VC5820	VERSACLIPPER 900A25	1
VH0021	RETRACTABLE HOSE 3/8	1
VH0035	SINGLE SPLIT CLAMP CLR, 1/2 ID	1
VH0039	REGULATOR	1
VH0041	PRESSURE GAUGE	1
VH0042	SHCS, 8 - 32 x 1/4	38
VH0043	LOCK NUT, 8 - 32	38
VH0053	HHCS 1/2 - 13 x 3 1/4	4
VH0054	HEX NUT 1/2 - 13	4
VH0055	QCK DISCON. HOSE COUPLING	1
VH0056	NIPPLE 3/8 x 3	1
VH0057	ELBOW 3/8	2
VH0058	MALE CONN (COMP) 1/2 x 3/8	2
VH0061	EYEBOLT 5/16 - 18 x 1 x 5/8	1
VH0062	HEX NUT 5/16 - 18	2
VH0064	TOOL BALANCER	1
VH0067	CAP	5
VH0071	COUPLING, 3/8 NPT	1
VH0098	SPRING SNAP, 5/16	1
VH0154	FLEX LOCK NUT, 5/16 - 18	2
VH0211	SHCS, 8 - 32 x 3/8	2
VH0215	SHOULDER BOLT, 1/2 x 2 3/4	3
VH0217	LOCKING PIN WITH LANYARD	1
VH0224	HHCS, 5/16 - 18 x 2 3/4	2
VH0233	FLAT WASHER, 1/2	2
VH0234	FLEX NUT. 3/8 - 16	3



REV	DESCRIPTION	BY	APPD	DATE	MATERIAL:	© 2000	VERTEX FASTENERS INC. 3714 JARVIS AVENUE SKOKIE, IL 60076 U.S.A.
A		JMW		2-1-00	-	DWN BY JMW	
B	2000 FORMAT	JMW		5-11-00	HEAT TREATMENT:	APPD	
C	REMOVED EYEBOLT HOLES FOR TUBING	JMW		4-30-02	-	DATE 2-1-00	VersaClipper 900 COMPLETE ASSEMBLY
D	RT & LT SPL LIFT	JMW		8-5-02	FINISH:	SCALE NONE	
					-	DWG. NO. VC5000D	B

PART #	DESCRIPTION	QTY
VC0002	MAIN VALVE BODY	1
VC0003	MAIN VALVE PISTON	1
VC0004	SPRING, PISTON	1
VC0006	PISTON	1
VC0007	PIN, CYLINDER BODY	1
VC0009	ROLLER	1
VC0011	LINK	2
VC0016	TRIGGER VALVE LEVER	1
VC0017	TRIGGER VALVE PISTON	1
VC0018	TRIGGER VALVE SLEEVE	1
VC0023	TRIGGER VALVE SPRING	1
VC0031	HANGER	1
VC0032	BEARING BRACKET	1
VC0072	CYLINDER END CAP (CLIP FEEDER)	1
VC0073	TORSION SPRING	1
VC0074	POLYETH BLK TUBE, 1/4 x 8 1/4	1
VC0290	HANGER PIN	1
VC0291	HOUSING PIN	1
VC0305	PCS EXTENSION	1
VC5101	DRIVER BLADE	1
VC5102	TOP PLATE	1
VC5113	FRONT PLATE	1
VC5118	LINK PIN	2
VC5119	YOKE	1
VC5129	CAP	1
VC5508	TRACK GUIDE	-
VC5509	TRACK	-
VC5800	PISTON (CLIP FEEDER)	1
VC5801	CYLINDER BODY (CLIP FEEDER)	1
VC5802	ANVIL	1
VC5803	SPACER	1
VC5804	PAWL	1
VC5805	RIGHT SIDE PLATE	1
VC5806	BLADE GUIDE	1
VC5807	CYLINDER MOUNT	1
VC5811	TRIGGER	1
VC5815	PISTON FEED SPRING	1
VC5817	MAGAZINE ASSEMBLY	1
VC5818	PAWL SPRING	1

VC5819	LEFT SIDE PLATE	1	VH0023	STREET ELBOW	1
VC5827	CYLINDER BODY	1	VH0024	SHCS, 4 - 40 x 3/8	4
VH0002	FLEX NUT, 1/4 - 20	3	VH0029	O-RING, 5/8 x 13/16	-
VH0003	10 - 14 x 5/8 PLASTITE	7	VH0030	O-RING, 7/16 x 5/8	-
VH0004	BHCS W/ PATCH, 1/4 - 20 x 1/2	1	VH0036	MALE PLUG	1
VH0005	O-RING, VALVE BODY	-	VH0042	SHCS, 8 - 32 x 1/4	2
VH0006	O-RING, VALVE BODY	-	VH0043	LOCK NUT, 8 - 32 (THIN HEIGHT)	-
VH0007	O-RING, VALVE BODY	-	VH0049	FLEX LOCK NUT, 10 - 24	1
VH0008	O-RING, VALVE PISTON	-	VH0069	PUSH-IN TUBE FITTING, 90° SWIVEL	2
VH0009	O-RING, CAP, 2 7/8 x 3	-	VH0097	QUICK RELEASE PIN	1
VH0010	O-RING, PISTON, 2 3/4 x 3 1/8	-	VH0101	DOWEL PIN, 1/8 x 3/4	4
VH0011	O-RING, TRIGGER	-	VH0112	O-RING, CAP 5/32 x 9/32	-
VH0012	SPRING PIN, 1/8 x 1 1/4	2	VH0152	FHCS, 1/4 - 20 x 1/2	1
VH0013	DOWEL PIN, 4MM x 24MM (YOKE)	1	VH0209	BHCS, 1/4 - 20 x 3/4 W/ PATCH	1
VH0015	BEARING, HANGER	1	VH0210	SHOULDER BOLT, 5/16 x 1	2
VH0016	BHCS, 1/4 - 20 x 1	1	VH0211	SHCS, 8 - 32 x 3/8	2
VH0018	FLANGE HS, 1/4 - 20 x 3/8	1	VH0212	SHCS, 10 - 32 x 3/8 W/ PATCH	4
VH0019	RETAINER CLIP	1	VH0213	SHOULDER BOLT, 1/4 x 1 3/4	1



(LEFT-SIDE PLATE REMOVED)

REV	DESCRIPTION	BY	APPD	DATE	MATERIAL:	© 2000	VERTEX FASTENERS INC.
A		JMW		1-20-00	-	DWN BY JMW	3714 JARVIS AVENUE SKOKIE, IL 60076 U.S.A.
B	2000 FORMAT	JMW		1-23-01	HEAT TREATMENT:	APPD	VersaClipper 900A30
C	CAP # CHNG	JMW		1-23-02	-	DATE 1-20-00	
D	ANVIL SHORTENED	JMW		8-5-02	FINISH:	SCALE NONE	
E	SWISS CHZ REV	JMW		11-14-02	-	DWG. NO. VC5820E	B*