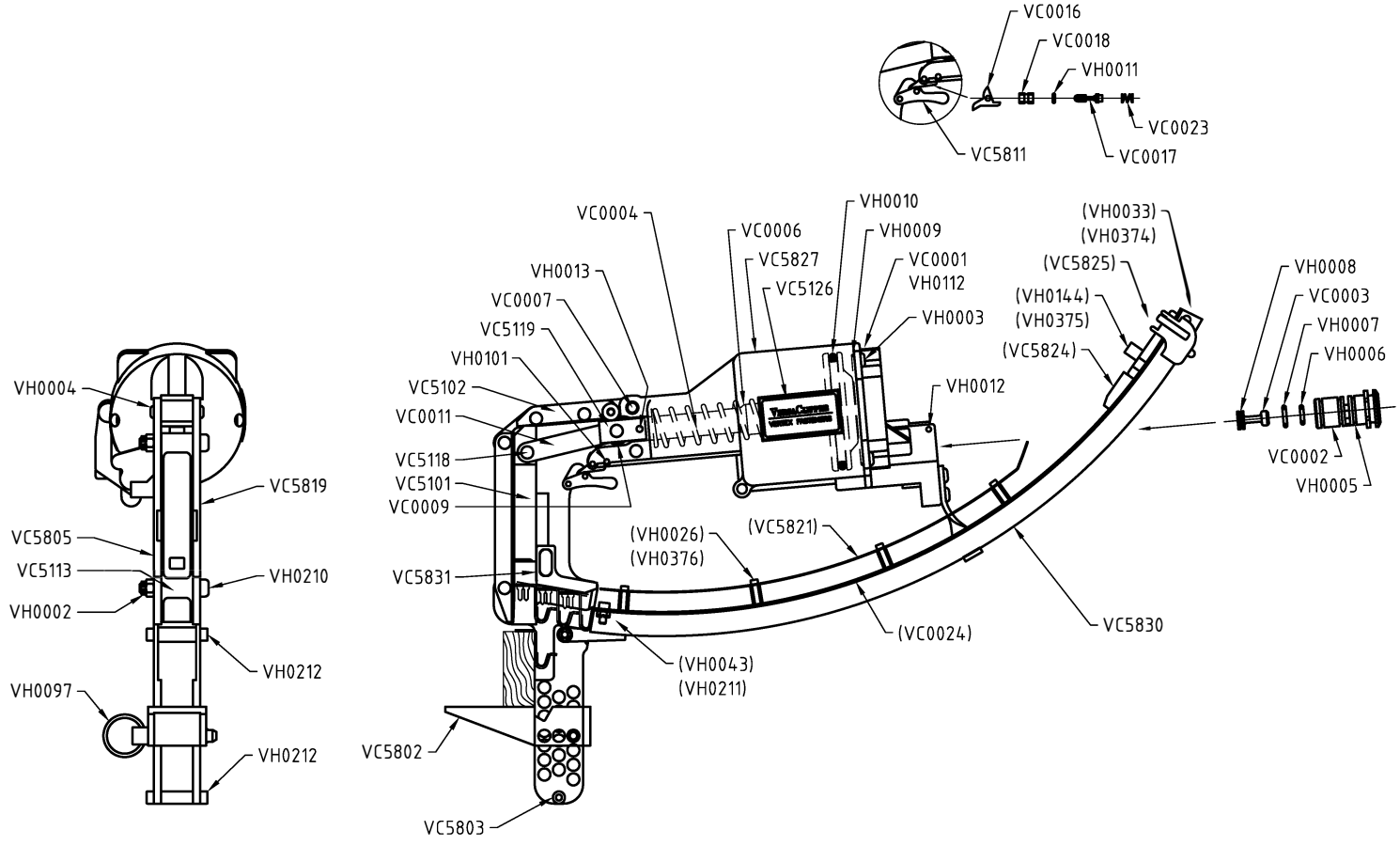


PART #	DESCRIPTION	QTY
VC0001	CAP	1
VC0002	MAIN VALVE BODY	1
VC0003	MAIN VALVE PISTON	1
VC0004	SPRING, PISTON	1
VC0006	PISTON	1
VC0007	PIN, CYLINDER BODY	2
VC0009	ROLLER	1
VC0011	LINK	2
VC0016	TRIGGER VALVE LEVER	1
VC0017	TRIGGER VALVE PISTON	1
VC0018	TRIGGER VALVE SLEEVE	1
VC0023	TRIGGER VALVE SPRING	1
VC5101	DRIVER BLADE	1
VC5102	TOP PLATE	1
VC5113	FRONT PLATE	1
VC5118	LINK PIN	2
VC5119	YOKE	1
VC5126	VERSACLIPPER LABEL	1
VC5802	ANVIL	1
VC5803	SPACER	1
VC5805	RIGHT-SIDE PLATE	1
VC5811	TRIGGER	1
VC5819	LEFT-SIDE PLATE	1
VC5827	CYLINDER BODY	1
VC5830	MAGAZINE ASSEMBLY	1
VC0024	SPRING	
VC5826	PUSHER ASSY	
VC5824	PUSHER POINT	
VC5825	PUSHER BODY	
VH0027	SHCS 4 - 40 x 5/8	
VH0144	SHCS 10 - 32 x 1 1/2	
VH0375	STANDOFF	
VC5829	MAGAZINE WITH COVER	
VC5821	COVER	
VC5828	MAGAZINE WELDED	
VH0026	SHCS 4 - 40 x 1 1/2	
VH0033	BHCS 10 - 32 x 1 1/2	
VH0374	STANDOFF	
VH0376	HEX STANDOFF	
VH0043	NYLOCK NUT 8 - 32	
VH0211	SHCS 8 - 32 x 3/8	
VC5831	BLADE GUIDE	1
VH0002	FLEX NUT, 1/4 - 20	3
VH0003	10 - 14 x 5/8 PLASTITE	7
VH0004	BHCS W/ PATCH, 1/4 - 20 x 1 1/2	1
VH0005	O-RING, VALVE BODY	-
VH0006	O-RING, VALVE BODY	-
VH0007	O-RING, VALVE BODY	-
VH0008	O-RING, VALVE PISTON	-
VH0009	O-RING, CAP, 2 7/8 x 3	-
VH0010	O-RING, PISTON, 2 3/4 x 3 1/4	-
VH0011	O-RING, TRIGGER	-
VH0012	SPRING PIN, 1/8 x 1 1/4	2
VH0013	DOWEL PIN, 4MM x 24MM (YOK)	1
VH0097	QUICK RELEASE PIN	1
VH0101	DOWEL PIN, 1/8 x 3/4	2
VH0112	O-RING, CAP 5/32 x 9/32	-
VH0210	SHOULDER BOLT, 5/16 x 1	2
VH0212	SHCS, 10 - 32 x 3/8 W/ PATCH	4

IS STRICTLY THE SOLE AND PROPRIETARY PROPERTY OF VERTEX FASTENERS INC. ANY REPRODUCTION OR USE IN WHOLE OR PART WITHOUT THE WRITTEN CONSENT AND PERMISSION FROM VERTEX FASTENERS INC. IS PROHIBITED.



(LEFT-SIDE PLATE REMOVED)

REV	DESCRIPTION	BY	APPD	DATE	MATERIAL:	© 2001	VERTEX FASTENERS INC.
A		JMW		1-23-02	-	DWN BY	JMW
B	SWISS CHZ REV	JMW		11-19-02	HEAT TREATMENT:	APPD	3714 JARVIS AVENUE SKOKIE, IL 60076 U.S.A.
					-	DATE	VERSACLIPPER 500A30
					FINISH:	SCALE	NONE
					-	DWG. NO.	VC5008B
							B



1798 Sherwin Avenue
 Des Plaines, IL 60018 U.S.A.
 EMAIL: vertex@leggett.com
 PHONE: 847-768-6139 FAX: 847-768-7192