



VersaClipper 3100™ Automatic Clipping Machine

The next generation
of automatic clipping
technology.



Fastest and most precise clipping machine in the world

With the ability to clip up to three times faster than other automatic clipping machines, the VC3100 has established a new industry standard for the highest level of productivity available.

Easy operation

Its advanced design makes it easy to operate, allowing any trained operator to reach the highest level of productivity with the VC3100.

Exclusive features

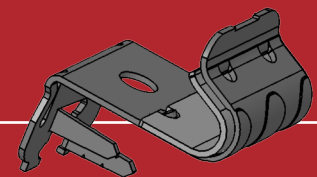
With advanced features not available on any other furniture clipping machine on the market, the VC3100 is leading the way with the next generation of furniture clipping technology.

The VC3100's design, features, and durable construction, along with our unparalleled customer service and support, make it the best choice for your clipping needs.



YOUR WORLDWIDE FASTENER SUPPLIER

VertexFasteners.com



- 19-gauge steel with triple embossment provides clip strength, durability, and holding power
- Integral nails enter rail at different points to prevent splitting and provide superior holding power
- High-profile, upturned edge to provide an excellent target for easy spring-up and hammer closing
- Extended polypropylene liner extends past the ends of the clip to prevent metal-to-metal noise
- Liner and spring locks mechanically lock liner in place and accurately position sinuous springs in clip
- Radius edges conform to sinuous spring shape

VersaClipper 3100™ Automatic Clipping Machine

Market-driven design exclusively for furniture applications

The VC3100 was designed by market-driven product development to handle the most challenging clipping needs, whether vertical or horizontal clipping. Unlike the competition's machines, the VersaClip and VC3100 together provide the complete solution for clipping both seats and seat backs, thereby reducing inventory, storage requirements, and need for changeover.

Intelligent microcomputer with a 10.4" LCD color touchscreen monitor

The VC3100 is equipped with a microcomputer control box and 10.4" LCD color touchscreen for easy operator interface. The control box incorporates an SD memory card with infinite rail recipe storage and backup capacity. Programming is easy and flexible, allowing alpha and numeric data fields in either imperial units or metric.

Advanced servomotor technology

The 750-watt servomotor power runs cool and efficiently, and can produce up to 630 feet per minute with maximum clip delivery of up to 7,200 per hour. The VC3100 is the fastest machine available, with clip-spacing accuracy of +/-1 mm (depending on your rail settings), which is also the most precise clip placement on the market.

Increased capacity with 1,500 clips per roll

Vertex provides 50% more clips per roll than the competition, offering increased productivity with less reloading time and changeover.

Ethernet-ready remote

programming and barcode scanning* of rail recipes

Provides a quick and accurate data entry process to reduce recipe entry errors and minimize set-up time, thereby improving efficiency and increasing output.

Joystick fence controls and quick height-adjustment flexibility

The height and width adjustments offer fast and easy changeover, with the maximum rail height of 4.5" and rail length of 95" providing a complete product range. Rail changeover can be accomplished within seconds for increased production efficiency and capability.

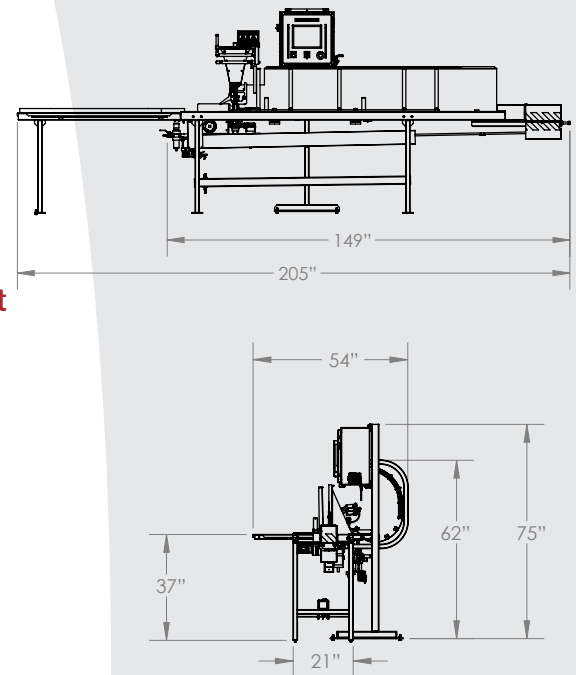
Advanced exit stacker system

Controls the exiting flow of the clipped rails, allowing the operator to continue loading the wood rails into the VC3100 without having to remove completed rail products.

World-class service and technical support

Vertex Fasteners is committed to providing our customers with world-class customer service and support. Unlike competitive machines, you can get standard replacement parts and Vertex factory service. Our dedicated regional sales/service technicians are Vertex employees, and they know the product, the business, and their customers. Vertex also has a well-trained staff of customer service, production, and engineering professionals ready and able to assist you.

*Barcode reader not included



CLIP SPECIFICATIONS

Clip Part Numbers

RV-1: H40272

Roll Qty: 1,500 clips

Pallet Qty: 96,000 clips

CLIP DELIVERY

Up to 7,200 clips per hour

CLIPPING ACCURACY

+/- 1 mm depending on rail settings

AIR PRESSURE

80-100 psi (5.5-6.9 bar)

FLOOR SPACE REQUIRED

4'6" x 15'4" (1.4 m x 4.7 m)

RAIL DIMENSIONS ACCEPTED

Height: 5/8" to 4.5" (15 mm to 152.4 mm)

Width: 5/8" to 8" (15 mm to 203.2 mm)



YOUR WORLDWIDE FASTENER SUPPLIER

address | 1798 Sherwin Avenue
Des Plaines, IL 60018 U.S.A.

phone | 847.768.6139
fax | 847.768.7192

web address | VertexFasteners.com