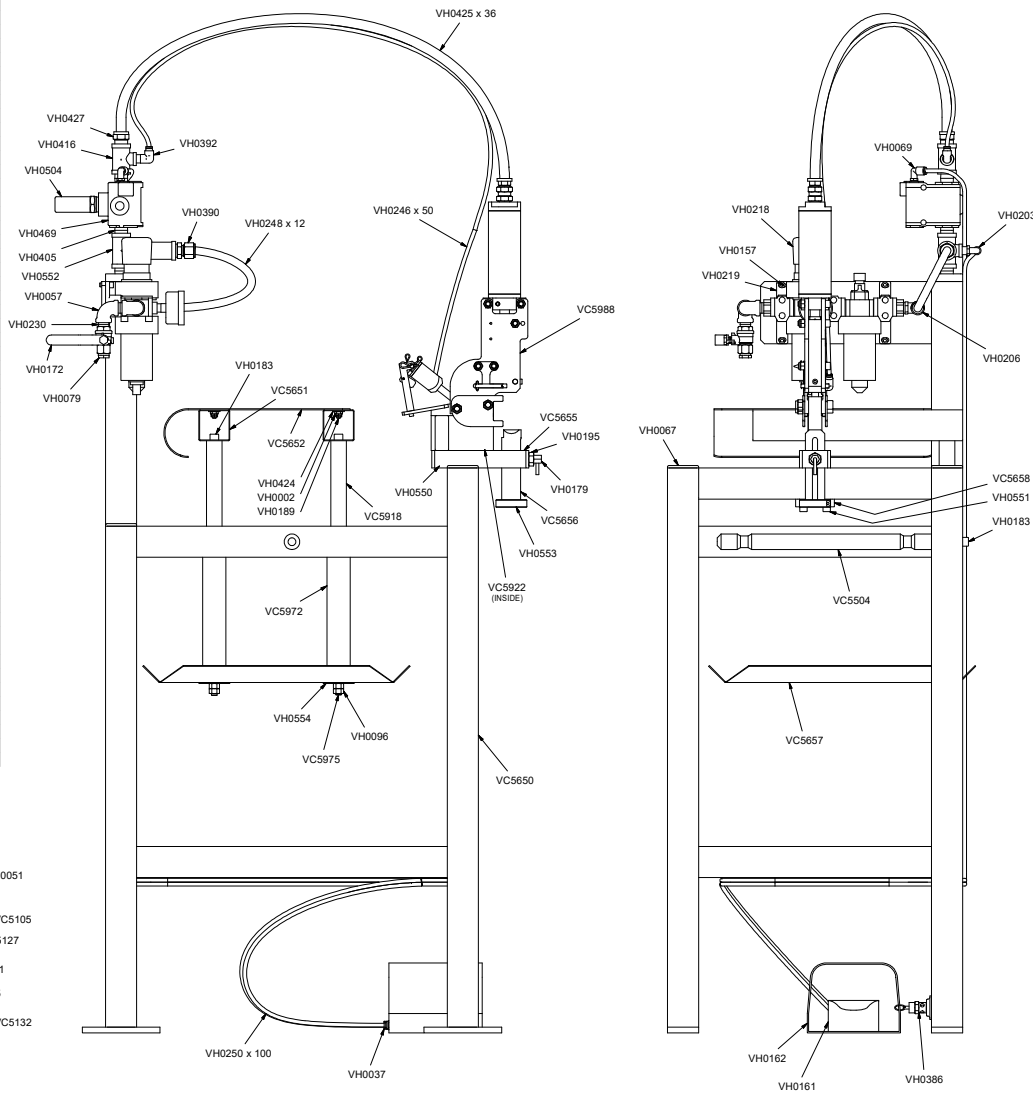
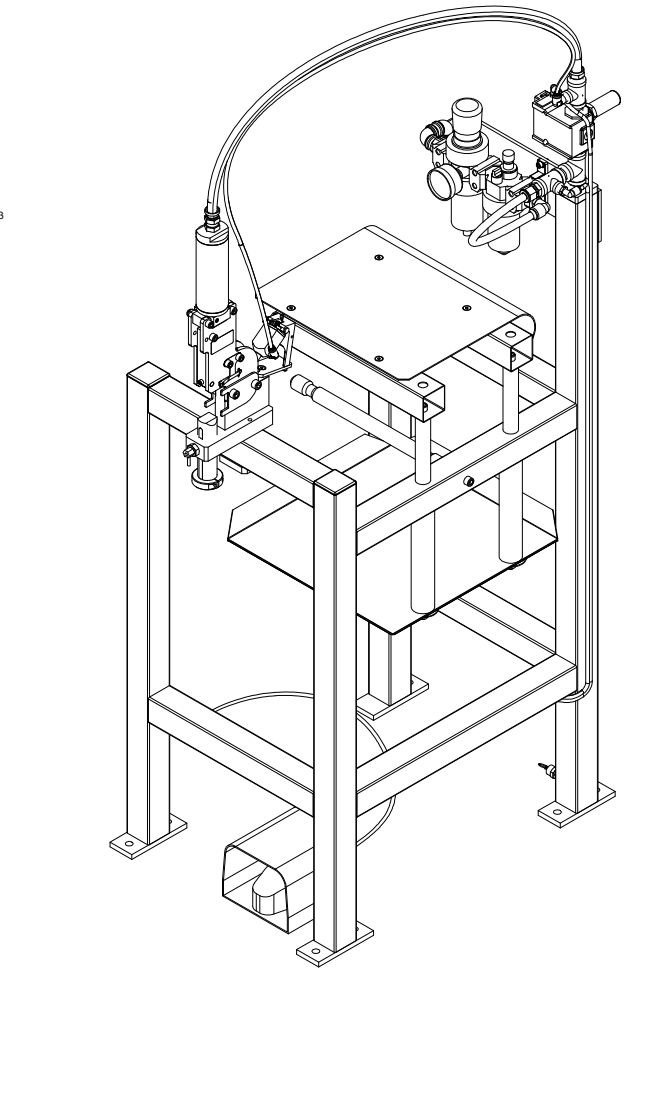


PART #	DESCRIPTION	QT
VC5504	SPOOL ROD	1
VC5550	1000 FRAME	1
VC5651	CLIP PLATFORM SUPPORT	2
VC5652	CLIP PLATFORM	1
VC5655	TOOL MOUNT	1
VC5656	THREADED ANVIL	1
VC5657	CLIP TRAY	1
VC5658	CLAMP BLOCK	1
VC5918	PLATFORM POST	2
VC5922	THREADED SPACER VERSACLIPPER 4000	1
VC5972	TRAY STANDOFF	2
VC5975	THREADED ROD	2
VC5988	TOOL ASSEMBLY	1
VH0002	NUT, FLEX, 1/4 - 20	4
VH0037	PUSH-IN FTG. STR. 1/4 OD x 1/8 NPT	2
VH0057	ELBOW, 3/8	2
VH0067	CAP	3
VH0069	PUSH-IN FTG. 90, 1/4 OD x 1/8 NPT	1
VH0079	BUSHING, REDUCER, 3/8 x 1/4	1
VH0096	NUT, HEX, 3/8 - 16	4
VH0157	SHCS, 1/4 - 20 x 5/8 W/ PATCH	4
VH0161	SWITCH, FOOT	1
VH0162	GUARD, FOOT SWITCH	1
VH0172	VALVE, VENTED SHUT-OFF BALL, 3/8 NPT	1
VH0179	PLUNGER	1
VH0183	SHCS, 3/8 - 16 x 3/4	3
VH0189	FHCS, 1/4 - 20 x 5/8	4
VH0195	NUT, JAM, 1/2 - 13	4
VH0203	PUSH-IN FTG. 90, 1/4 OD x 1/4 NPT	1
VH0206	PUSH-IN FTG. 90, 1/2 OD x 3/8 NPT	1
VH0218	FILTER/REGULATOR LUBRICATOR	1
VH0219	BRACKET	2
VH0230	NIPPLE, 3/8 NPT x 1 CLOSE	3
VH0246	TUBING, 1/4, POLYETHYLENE x 50	1
VH0248	TUBING, 1/2, POLYETHYLENE x 12	1
VH0250	TUBING, DUAL, 1/4 x 100	1
VH0386	SAFETY VALVE	1
VH0390	FTG. BRASS CMPRSN, STR. 1/2 OD x 1/2 NPT	1
VH0392	PUSH-IN FTG. 1/4 x 1/4 NPT	1
VH0405	NIPPLE, 1/2 NPT x 1 1/8 CLOSE, SCH 80	4
VH0416	TEE, REDUCER, 1/2 x 1/4 x 1/2	2
VH0424	WASHER, 1/4	4
VH0425	HOSE, 1/2, BLUE x 36	1
VH0427	HOSE BARB, 1/2 x 1/2 NPT	1
VH0469	VALVE	1
VH0504	MUFFLER, 3/4 NPT	1
VH0550	SHCS, 3/8 - 16 x 1 1/2	2
VH0551	SHCS, 5/16 - 18 x 3 1/4	2
VH0552	TEE, 1/2	1
VH0553	CLAMP COLLAR	1
VH0554	WASHER, FENDER, 3/8	2



VC0034	WARNING LABEL	1	VC5121	PAWL SPRING	2	VC5903	RIGHT-HAND SIDE PLATE	1	VH0226	SHCS, 5/16 - 24 x 1 3/4	5
VC0230	CLIP FEEDER STOP	1	VC5122	LEFT-HAND PAWL	1	VC5911	GUIDE PLATE	2	VH0227	NUT, NYLOCK, 5/16 - 24	5
VC5100	PISTON	1	VC5123	RIGHT-HAND PAWL	1	VC5940	FRONT PLATE	1	VH0325	SET SCREW, 5/16 - 18 x 3/8	2
VC5103	CYLINDER BODY	1	VC5124	FRONT PLATE PIN (SPECIAL)	1	VH0112	PIN, ROLL, 1/8 x 1 1/4	1	VH0379	CYLINDER	1
VC5105	CYLINDER END CAP	1	VC5126	VERSACLIPPER LABEL	1	VH0030	O-RING, #111	1	VH0391	PUSH-IN FTG. 1/4 x 1/8 NPT	1
VC5106	ANVIL	1	VC5127	SPRING	1	VH0051	SHCS, 10 - 32 x 1/2	4	VH0403	SHCS, 3/8 - 24 x 2	2
VC5110	BLADE GUIDE	1	VC5132	PIN, FEED CYLINDER	1	VH0066	SHCS, 8 - 32 x 5/8	2	VH0426	HOSE BARB, 1/2 x 3/8 NPT	1
VC5114	MOUNTING BRACKET	1	VC5900	DRIVER BLADE	1	VH0135	O-RING, #210	1	VH0531	HAIR PIN	1
VC5115	CYLINDER MOUNT	1	VC5901	CYLINDER MOUNT	1	VH0152	FHCS, 1/4 - 20 x 1/2	2	VH0779	NUT, NYLOCK, 3/8 - 24	2
VC5117	TORSION SPRING	1	VC5902	LEFT-HAND SIDE PLATE	1	VH0212	SHCS, 10 - 32 x 3/8 W/ PATCH	1	VH0993	HOSE FTG, 3/8 NPT x 3/8 SWVL	1
PART #	DESCRIPTION	QT	PART #	DESCRIPTION	QT	PART #	DESCRIPTION	QT	PART #	DESCRIPTION	QT
VC5988 - TOOL ASSEMBLY			VC5988 - TOOL ASSEMBLY			VC5988 - TOOL ASSEMBLY			VC5988 - TOOL ASSEMBLY		



REV	ECN	DESCRIPTION	BY	APPD	DATE	MATERIAL:	HEAT TREATMENT:	FINISH:	DATE	SCALE	DWG. NO.
A	505	REVISED TO ADD VEH0135 (210)	JMW	DA	6-17-05				6-22-04	1:4	VC5014
B	656	REAS VEH0152 & VEH0066	JMW	DA	3-15-06				6-22-04	1:4	VC5014
C	939	REAS VC5904 NOW VC5900	JMW	MR	11-12-09				6-22-04	1:4	VC5014
D	996	ADDED VC992	JMW	JMF	11-9-10				6-22-04	1:4	VC5014
E	1233	ADDED 2 VH0097	JMW	MR	9-25-12				6-22-04	1:4	VC5014

THIS DOCUMENT AND THE DATA DISCLOSED HEREIN OR HEREWITH IS NOT TO BE REPRODUCED, USED, OR DISCLOSED IN WHOLE OR IN PART TO ANYONE WITHOUT THE PERMISSION OF VERTEX FASTENERS.



1798 Sherwin Avenue
 Des Plaines, IL 60018 U.S.A.
 EMAIL: vertex@leggett.com
 PHONE: 847-768-6139 FAX: 847-768-7192