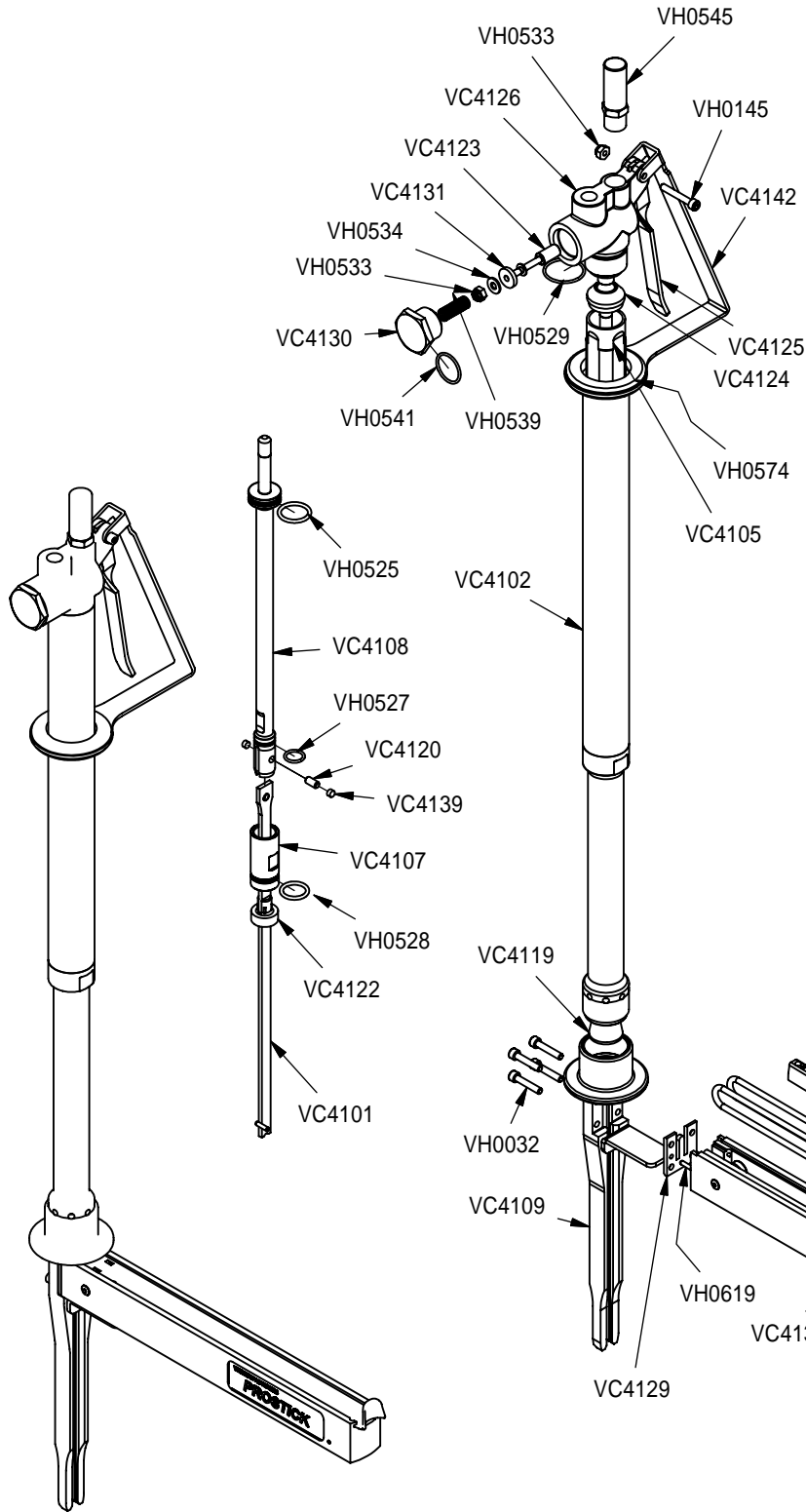


THIS DOCUMENT AND THE DATA DISCLOSED HEREIN OR HEREWITH IS NOT TO BE REPRODUCED, USED, OR DISCLOSED IN WHOLE OR IN PART TO ANYONE WITHOUT THE PERMISSION OF VERTEX FASTENERS INC.



VERTEX #	BOSTITCH REF #	DESCRIPTION	QTY
VC4101	100828	DOUBLE STAPLE BLADE	1
VC4102	BC1527A	BODY - STANDARD	1
VC4105	BC1530	CYLINDER SLEEVE	1
VC4107	BC1477	LOWER PISTON	1
VC4108	BC1529	UPPER PISTON	1
VC4109	100346	DOUBLE STAPLE HEAD	1
VC4119	BC1572	DRIVER BUMPER	1
VC4120	BC1478	DRIVER PIN	1
VC4122	101608	PISTON PLUG	1
VC4123	BC367	VALVE STEM	1
VC4124	BC1474	RETURN BUMPER	1
VC4125	BC283	TRIGGER	1
VC4126	BC1602A	VALVE HOUSING	1
VC4129	BC1545	MAGAZINE PLATE	1
VC4130	BC156	VALVE PLUG	1
VC4131	BC442	VALVE STEM SEAL	1
VC4132	BC1260	SPRING	2
VC4133	BC34	PIN	1
VC4134	BC1537	MAGAZINE SLIDE	1
VC4135	BC694	PUSHER	1
VC4136	BC1535A	MAGAZINE	1
VC4139	T34233	NYLON INSERT	2
VC4142		TRIGGER GUARD	1
VH0032	UA3816.4	SHCS, 10 - 24 x 1	4
VH0145	UA3820	SHCS, 10 - 32 x 1 1/4	1
VH0525	87137	O-RING, #117	-
VH0527	86458	O-RING, #014	-
VH0528	88998	O-RING, #115	-
VH0529	88705	O-RING, #024	-
VH0533	HN1032.5	NUT, FLEX, 10 - 32	2
VH0534	PW10.5	WASHER, #10	1
VH0537	BC41	SPRING, DETENT PIN	1
VH0538	UB2820	PIN, SPRING, 3/32 x 1 1/4	1
VH0539	T36135	SPRING, VALVE	1
VH0541	105502	O-RING, #020	-
VH0545		MUFFLER	1
VH0574		GROMMET	-
VH0619	UB2808.2	PIN, ROLL, 1/8 x 1/2	-

REV	ECN	DESCRIPTION	BY	APPD	DATE	© 2004	VERTEX FASTENERS INC. 3714 JARVIS AVENUE SKOKIE, IL 60076 U.S.A. PROSTICK DOUBLE SHOT STANDARD WEIGHT	
A	387	NAME CHANGE	JMW	DA	7-15-04	DWN BY JMW		
B	484	ADDED VC4142	JMW	DA	5-2-05	APPD DA		
C	654	ADDED/EDITED NUMBERS	JMW	DA	3-2-06	DATE 2-25-04		
						SCALE		
DWG. NO. VA0318							INVENTOR	A