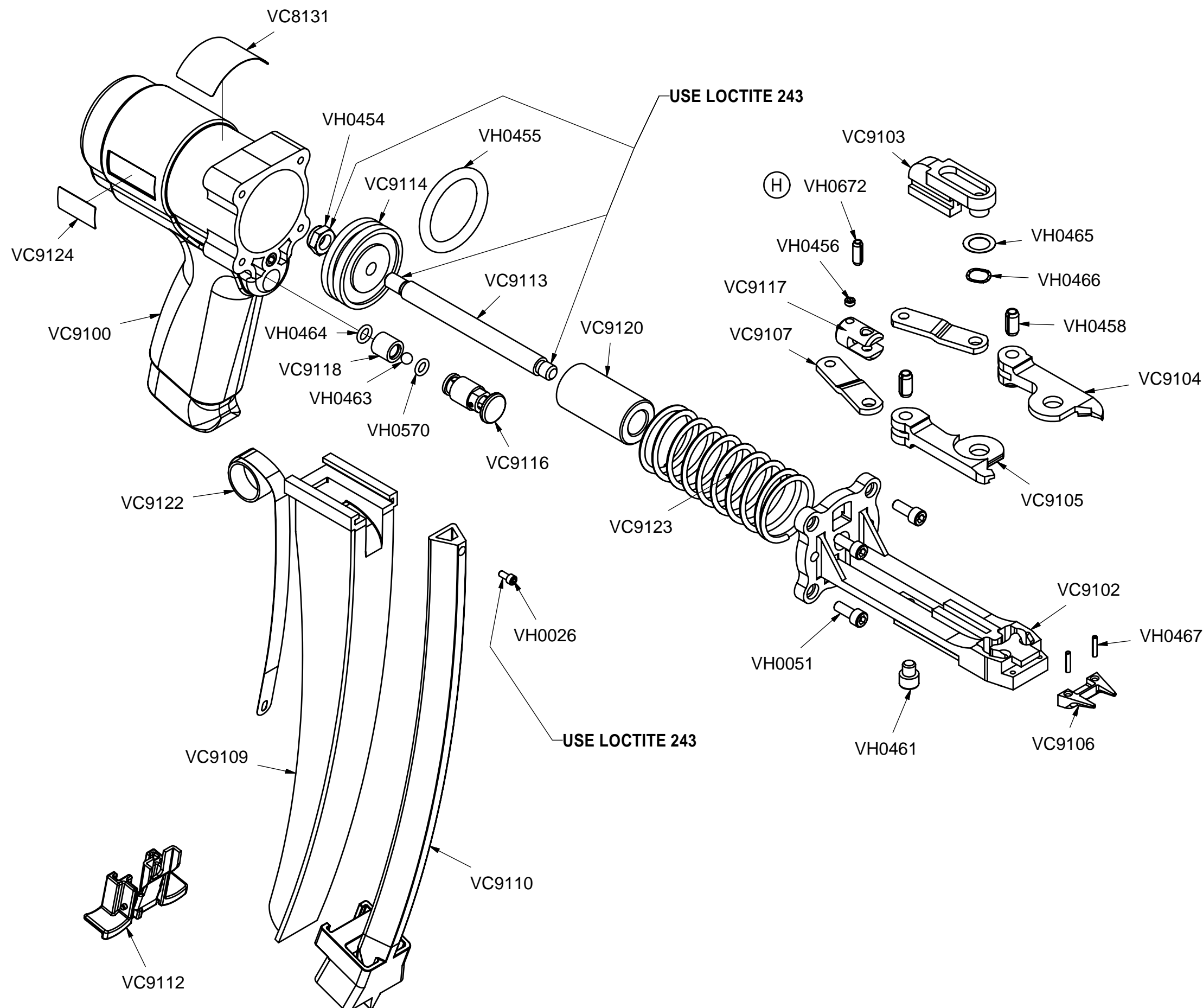
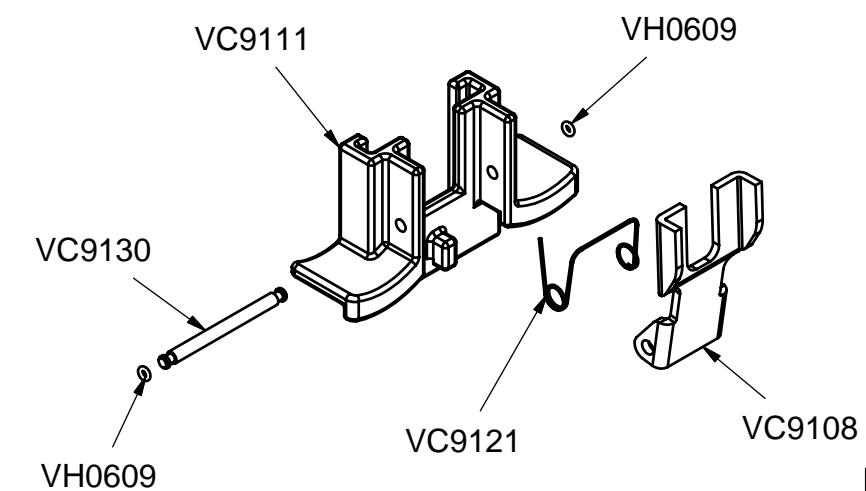




1798 Sherwin Avenue  
Des Plaines, IL 60018 U.S.A.  
EMAIL: vertex@leggett.com  
PHONE: 847-768-6139 FAX: 847-768-7192



PART #	DESCRIPTION	QT
VC8131	LABEL, WARNING	1
VC9100	HOUSING	1
VC9102	CARRIAGE	1
VC9103	SLIDE	1
VC9104	LEFT JAW	1
VC9105	RIGHT JAW	1
VC9106	TEETH	1
VC9107	LINK	2
VC9109	CARRIER	1
VC9110	RAIL	1
VC9112	PUSHER ASSEMBLY	1
VC9113	ROD	1
VC9114	PISTON	1
VC9116	TRIGGER ASSEMBLY	1
VC9117	CLEVIS	1
VC9118	AIR VALVE SEAT	1
VC9120	BUMPER	1
VC9122	SPRING, CONSTANT FORCE	1
VC9123	SPRING, RETURN	1
VC9124	LABEL	2
VH0026	SHCS, 4 - 40 x 1/4	1
VH0051	SHCS, 10 - 32 x 1/2	4
VH0454	NUT, NYLOCK, 5/16 - 24	1
VH0455	O'RING, #222, PISTON	-
VH0456	SET SCREW, 10 - 32 x 1/8	1
VH0458	PIN, ROLL, 1/4 x 1/2	2
VH0461	SHCS, 1/4 - 20 x 3/8	1
VH0463	SS BALL, TYPE 302, 5.5 MM	1
VH0464	O-RING, #011	1
VH0465	WASHER, CUP	AR
VH0466	WASHER, WAVY	AR
VH0467	PIN, ROLL, 3/32 x 7/16	2
VH0570	O-RING, #009	1
VH0672	PIN, ROLL, 3/16 x 1/2	1



VC9112 ASSEMBLY

VC9112 ASSEMBLY		
PART #	DESCRIPTION	QT
VC9108	LATCH	1
VC9111	PUSHER	1
VC9121	SPRING, TORSION	1
VC9130	PIN, RETAINING	1
VH0609	O-RING, #002	2

REV	DESCRIPTION	BY	APPD	DATE	MATERIAL:	TOL. UNLESS SPECIFIED	© 2003	VERTEX FASTENERS INC.
E	ECN 606	JMW	MAR	1-9-06		INCHES .X = ± .030 .XX = ± .015 .XXX = ± .005 ANGLES ± 1/2°	DWN BY JMW	3714 JARVIS AVENUE SKOKIE, IL 60076 U.S.A.
F	ECN 749, CHANGE O-RING QTY - PART OF ASSY	JMW	MAR	1-26-07	HEAT TREATMENT:		APPD MAR	D-RING ASSEMBLY
G	ECN 860, DEL VC9130 FM MAIN BOM	JMW	MAR	2-11-08	FINISH:		DATE 10-3-03	
H	ECN 888, WAS VH0457	JMW	MAR	9-4-08			SCALE NONE	
J	ECN 919, VH0467 WAS NOT LISTED IN BOM	JMW	MAR	4-23-09			DWG. NO. VC9000 / ORDER NO. VA0277	C